

**A message from CSEA Long Island Region President Jarvis Brown**



Greetings, CSEA Long Island Region One,

Your region board and I are honored to be in the position to help Region One members and strengthen the name of CSEA on Long Island.

One of the main things we hope to accomplish in our first term is bridging the gap between region, local and unit leadership. We believe that if we can work together as a collective and cohesive

group, we will rise to the highest level of members' expectations.

This leads me to the development of Region One Meet and Greets, where officers will be nurturing our relationships with members. These events will be taking place around Long Island to allow region leaders to reach more members. Your Region Board and I want to interact with members from Suffolk County's twin forks to western Nassau County. If you have ever wanted to meet your region officers, you will not want to miss these events. We will be releasing more information as we get closer to the event dates.

CSEA has declared May Member Appreciation Month, a time for CSEA to celebrate the significant contributions of CSEA members across the state. In our region, the Long Island Region Board is preparing to hold two Member Appreciation bowling nights. The first event will be May 10 at The Allstar in Riverhead. The other event will be on May 17 at AMF Syosset Lanes. Keep your eyes open for an email about how you can win tickets.

The Region One Golf Classic will also be held in May. All proceeds from the event will go to our newly-created CSEA Long Island Region Scholarship Fund, which we will use to award three \$2,000 scholarships to graduating highschool seniors. You will be hearing more about how to apply at a later date.

Our first-ever Region One Conference to be held on Long Island will be Saturday, November 2. The region board and I are especially proud of this event, as it is the first time the region workshop has been this conveniently located. We hope to see both new and familiar faces in the crowd. "Communicate to Educate" is the theme of the workshop, and your region board and I will be working with the CSEA Education and Training Department to arm you with the information you need to be more knowledgeable about your union.

That is just the beginning of what we have in store for the next four years. The Region Executive Board and I are prioritizing education, with the understanding that an educated membership is a dynamic membership that has the power to come together for impactful change.

In Solidarity,



Jarvis Brown

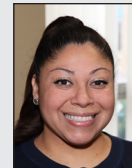
**Long Island Region Leadership**



Executive Vice President  
**John Mooney**



1st Vice President  
**Michael Errico**



2nd Vice President  
**Guadalupe Johnson**



3rd Vice President  
**Kris Kalender**



4th Vice President  
**George Storm**



Secretary  
**Larry Germano**



Treasurer  
**Barbara Homburger**

**Where to find us online**

Long Island Region Facebook:  
[facebook.com/csealongisland](https://facebook.com/csealongisland)

CSEA Statewide Facebook:  
[facebook.com/csealocal1000](https://facebook.com/csealocal1000)

Instagram: [instagram.com/csealongisland](https://instagram.com/csealongisland)

CSEA Statewide Website: [cseany.org](https://cseany.org)

CSEA Work Force online newspaper:  
[cseany.org/workforce](https://cseany.org/workforce)



scan to visit us  
on facebook

# Taking action to save safety-net hospital

CSEA representatives are fighting back against Nassau University Medical Center [NUMC] officials, who falsely claim the hospital has not received enough funding from the state to keep the hospital open.

Closing the hospital is a move that would leave many Long Islanders without access to quality care, as NUMC is a safety-net hospital that provides vital health care services to community members who can't afford the costs.

More so, a closure would leave more than 3,000 CSEA members who are employed at

NUMC without a job, along with hundreds of CSEA members who work at the A. Holly Patterson Extended Care Facility and the Nassau County Correctional Facility.

"The reality is that, the hospital board has grossly mismanaged the funds that were allocated to NUMC to keep it afloat," said CSEA Long Island Region President Jarvis Brown.

CSEA Long Island Region officers, CSEA Nassau University Medical Center Unit President Shakira Settles, Nassau Local 830 officers and CSEA Legislative and Political Action staff have been sharing the facts with members employed at the hospital. Supporting them in this effort is CSEA Nassau Local 830 President Ron Gurrieri.

CSEA set up an information table at NUMC, where union activists held conversations with members about the misinformation they have been told by



The CSEA NUMC Unit set up an informational table, which served as a setting to have conversations.

the hospital board versus the facts CSEA were sharing. The conversations were then reinforced with the distribution of written materials that reiterate what was discussed.

CSEA has also been having weekly labor/management meetings with hospital administration to discuss what needs to be done to keep all the impacted facilities open and CSEA members gainfully employed.

"Communication is key," said Brown. "By putting boots on the ground, we've been able to increase our communication with the hospital and improve member engagement."

CSEA's efforts are starting to pay off. The hospital has begun to work with former patients to resolve outstanding debts, which

is helping to adjust the hospital's deficit. There is also increased communication with CSEA employees about the status of the hospital administration's plans to improve NUMC's financial position.

"After several discussions with CSEA, Nassau Health Care Corporation Administration is implementing new initiatives that are directly addressing longstanding issues at the hospital," said Settles. "Members working together to create a plan of action is why we're moving in the right direction."

— Wendi Bowie



CSEA NUMC Unit President Shakira Settles shows a member a palm card with facts about the hospital's financial capabilities.



CSEA Long Island Region President Jarvis Brown, left, speaks to an NUMC worker about the misinformation the hospital board has been sharing.



# Committee chairs promise bipartisanship

CSEA Long Island Region President Jarvis Brown has selected members for Region One's new and energized political action committee, including brand new committee chairs. Here are a few of their thoughts:

*"I am honored to be on President Brown's executive board and was humbled when he asked me to be the chair of the Region One Political Action Committee. It's not about being a Democrat, Republican or an Independent - it's about putting the membership first. Endorsements have to be earned. If political candidates want a seat at the table with CSEA, they have to earn it. The Region One Political Action Committee will hold candidates accountable regardless of political party. You mess with one of us, you will get all of us. We are Union Strong!"*

— John Mooney, City of Long Beach Unit President and Long Island Region Executive Vice President



*"Our region political action committee [PAC] will be working to increase communication between all units, locals and the region. The needs of the Region One membership is the PAC's first priority, so we are only going to endorse candidates who give us a reason to believe they will support and respect CSEA members. Candidates must also ensure us that CSEA members will receive fair contracts. I believe in President Brown and this committee. We will have great success."*

— Patrick Liere, Town of Brookhaven Blue-Collar Unit President and Suffolk County Local Executive Vice President

*"I share in President Brown's vision that all of CSEA's locals and units should be working together in unison for the benefit of all. Candidates seeking endorsement by CSEA should be held to their promises and support CSEA workers across Long Island. All endorsed officials should be willing to use their platforms and contacts to give voice to CSEA's concerns and help us resolve the issues, whether it's in the candidate's elected district or not."*

*I genuinely look forward to the opportunity to serve the CSEA members here on Long Island."*

— Eric Faraone, Town of Hempstead Local Executive Vice President

**The Political Action Committee Chairs have a meeting to discuss the direction of the committee. Pictured: CSEA Long Island Region President Jarvis Brown, CSEA Long Island Region Executive Vice President John Mooney, committee chairs Eric Faraone and Patrick Liere and CSEA Political Action Committee Staff Liaison Sue Castle.**



For the first time, CSEA's Town of Brookhaven White Collar Unit, Blue Collar Unit and Highway Unit held a joint member meeting to discuss how working together will help members employed by the town achieve their goals and increase CSEA's power.

The group discussed using small actions to demonstrate the importance of the town's workforce.

CSEA Long Island Region President Jarvis Brown spoke at the meeting, telling attendees that their most powerful action is being engaged and building a strong labor/management team. Brown added that the team's efforts should be "continuous and respectful."

Other leaders from our union's Town of Brookhaven units gave members unit updates and thanked attendees for being open to working together. Hopes are high that it will be a fruitful endeavor.

— Wendi Bowie



# Long Island Region members take the plunge

A cold, rainy day didn't stop CSEA Long Island Region members from "freezin' for a reason" at the Town of Oyster Bay Polar Plunge. Region One raised more than \$17,000 for Special Olympics New York athletes, making the CSEA Long Island Region the top fundraising team for the day. As it costs \$400 per year to fund one athlete, the donations will put several athletes on the road to fulfilling their competitive goals.



The CSEA Polar Plungers and their supporters.



CSEA Polar Plunge participant Chris Jones shows off CSEA's team sign before the event ceremony. (Photo by John Mooney)



From left to right, CSEA Long Island Region President Jarvis Brown and Town of Oyster Bay Supervisor Joseph S. Saladino triumphantly emerge from the water.



Kyle Kielkowski is one of a handful of members who took the plunge at the rainy-day polar plunge event.



The CSEA Long Island Region Polar Plunge team is presented with a plaque, recognizing the group as the top fundraising team for the day.



## Welcome new members

Welcome aboard to SCO Tyree Learning Center workers! By an overwhelming vote of 30-2, the group has voted to become a part of our union family. Led by CSEA Long Island Region President Jarvis Brown and SCO Family of Services – Sea Cliff Local President Sirlentor Berry,

our new members will be working with the same students as workers at the SCO Family of Services -Sea Cliff workers, who CSEA organized four years ago with the help of Brown and Berry. Rounding out the organizing team are CSEA Oyster Bay Local officers, CSEA Statewide Organizer Grace

Klein, CSEA Deputy Director of Organizing Jessica Riley and CSEA Senior Attorney Aaron Kaplan.

**Some of the newly organized SCO Tyree Learning Center workers on the day they voted to become CSEA members.**

Save the Date  
**REGION ONE  
GOLF OUTING**  
May 13, 2024



**Member Appreciation**

***Bowling Nights***



Riverhead - May 10th  
Syosset - May 17th