

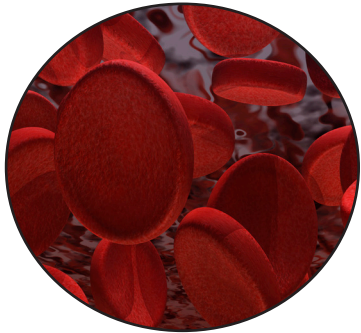


FIRST AID

INFORMATION AND REGULATIONS AROUND FIRST AID IN THE WORKPLACE

OSHA Regulation Subpart K 29CFR.1910.151 has specific requirements for First Aid in the workplace that employers must follow. All employers, *regardless of size*, must have trained first aid providers at all workplaces if there is no infirmary, clinic, or hospital in near proximity to the workplace which is used for the treatment of all injured employees.

Near proximity is defined by OSHA as: A response time of 4 minutes or less for high-risk work site where death or serious physical harm can reasonably occur or 15 minutes or less for all other workplaces.



OSHA assumes workers trained as first aid providers are reasonably expected to be exposed to blood or other potentially infectious materials. Employers must comply with the provisions of the bloodborne pathogens standard [1910.1030]. This includes employee training, providing PPE, sharps management, access to Hepatitis B vaccine, and a written exposure control plan.

OSHA does not consider an on-line only training to be adequate for first aid. The skills required of first aid responders are physical in nature, such as bandaging, and the only way these skills can truly be learned is through practice.

In addition to the basic first aid requirements, employers who have workers entering permit required confined spaces, conducting logging operations, commercial diving, or working on electric power generation, transmission and distribution must also have responders trained in cardiopulmonary resuscitation (CPR).



Although OSHA does not require AEDs in the workplace, New York State laws require them in most public buildings, places of assembly, schools, gymnasiums, and swimming pools.



REQUIRED KIT CONTENTS/PPE

Adequate first aid supplies must be **readily available**. OSHA determines **adequacy** on a case-by-case basis. High hazard work in a remote area may require additional or specific devices. Employers should look at injury and illness logs, worker's compensation runs, incident reports, and / or job hazard analysis to determine the needed first aid supplies. Minimum requirements for first aid kits are listed in ANSI-Z308. **Readily available** means in an easily accessible area, that the first aid provider generally should NOT have to travel through several doorways, hallways and / or stairs to access the supplies.

Minimum (not necessarily adequate) first aid supplies must at least include:

1 Absorbent compress	16 Adhesive bandages	1 Roll Adhesive Tape
10 Antiseptic applications	6 Burn treatment applications	2 Pairs medical exam gloves
4 Sterile 3" x 3" gauze pads	1 Triangular bandage 40"x40"	

Recommended additional supplies include:

Scissors	Bandage compresses	Eye coverings	Automated external defibrillator
Eye wash	Cold packs	Roller bandages	
CPR barrier	Trauma pads	Foil blanket	

Employers must provide appropriate personal protective equipment (PPE). General PPE Requirements 1910.132, Eye and Face Protection 1910.133, Hand protection 1910.138, and if applicable Respiratory Protection 1910.134. Typically, personal protective equipment in first aid includes gloves, eye-protection, and masks.

OCFS Requirements for Childcare Providers:

All childcare programs must have at least one caregiver who holds a valid certification in CPR and first aid on the premises during the program's operating hours. Certifications must be appropriate to the ages of the children in care. All certifications in CPR and first aid must contain an in-person competency component. Certifications must be on file and available for review during working hours. Homes must be equipped with a non-commercial portable first aid kit which is accessible for emergency treatment. Over the counter medications or hand sanitizer is not allowed. Kits must be stocked to treat a broad range of injuries and situations, must be restocked as necessary and must be kept in a clean, covered container or cabinet inaccessible to children.

For more information and resources visit:

www.cseany.org/safety



Subscribe to our newsletter:



Knowledge is power—but collective action saves lives.

At CSEA, transforming knowledge into action is central to our mission of protecting workers. When hazards and close calls are documented and reported, they can be addressed before they cause harm. That's how we prevent injuries and illnesses—by making sure problems don't get ignored. Your voice and vigilance are essential. Now more than ever, we need your help to ensure every workplace is safe, healthy, and accountable.

THE LIFE YOU SAVE COULD BE YOUR OWN!